

MONTHLY MEMBERSHIP PROGRESS REPORT

District A 15

Results as of: 8/31/2024

GMT:

LOCATION ONTARIO

GMT CA

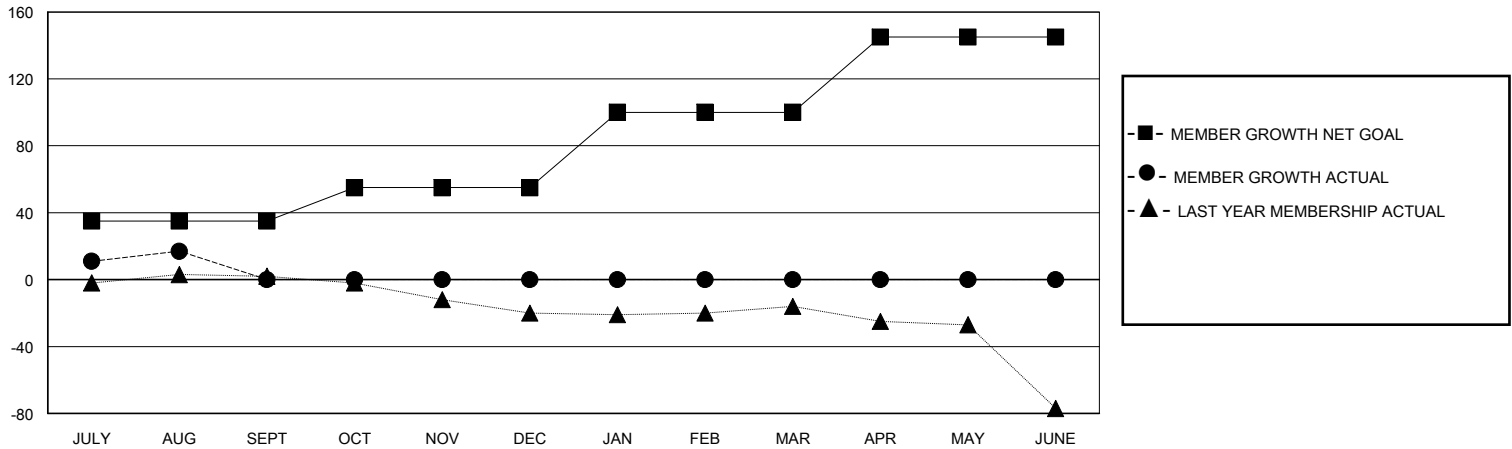
Clubs			
RESULTS FOR 2024-2025			
QUARTER	NEW CLUB GOAL	NEW CLUBS	DROPPED CLUBS
JULY/AUG/SEPT	0	0	1
OCT/NOV/DEC	1	0	0
JAN/FEB/MAR	0	0	0
APR/MAY/JUNE	0	0	0

Members			
RESULTS FOR 2024-2025			
QUARTER	MEMBER GROWTH NET GOAL	MEMBER GROWTH ACTUAL	DROPPED MEMBERS ACTUAL (including transfers)
JULY/AUG/SEPT	35	35	15
OCT/NOV/DEC	20	0	0
JAN/FEB/MAR	45	0	0
APR/MAY/JUNE	45	0	0

GOALS AND ACTUAL NEW CLUBS CUMULATIVE



GOALS AND ACTUAL MEMBERS CUMULATIVE



DROPPED CLUBS: 1

9 CLUBS OF 57 ADDED 1 OR MORE NEW MEMBERS

GENDER DISTRIBUTION

MALE 910 (70.76%)
FEMALE 376 (29.24%)

DROPPED MEMBERS

DECEASED	7
CLUB CANCELLED	0
OTHER	8
TOTAL	15

[CLICK HERE FOR CUMULATIVE MEMBERSHIP DATA](#)

TOTAL FAMILY UNIT MEMBERS	163
FAMILY MEMBERS PAYING HALF DUES	84